

GP600-2 2V600AH

GP SERIES-Telecom Battery



Specification

Nominal Voltage	2V	
Nominal Capacity(10HR)	600AH	
Dimension	Length	225±2mm (8.85 inches)
	Width	181±2mm (7.12 inches)
	Container Height	353±2mm (13.89 inches)
	Total Height (with Terminal)	356±2mm (14.01 inches)
Approx Weight	Approx 35.1 kg (77.29 lbs)	
Terminal	T11	
Container Material	ABS	

Applications

- ◆ Tele-communication central station (wired or cellular)
- ◆ Power system communication, military communication, etc.
- ◆ Network communication including: data transmission, television signal transmission, etc.
- ◆ Uninterruptable Power System (UPS- for Telecom)

Rated Capacity	600.0 AH/60.0A	(10hr, 1.80V/cell, 25°C/77°F)
	506.0 AH/101.2A	(5hr, 1.75V/cell, 25°C/77°F)
	417.9AH/139.3A	(3hr, 1.75V/cell, 25°C/77°F)
	333.0 AH/333.0A	(1hr, 1.60V/cell, 25°C/77°F)
Max. Discharge Current	4800A (5s)	
Internal Resistance	Approx 0.55 mΩ	
Operating Temp.Range	Discharge	-15~50°C (5~122°F)
	Charge	0~40°C (32~104°F)
	Storage	-15~40°C (5~104°F)
Nominal Operating Temp. Range	25±3°C (77±5°F)	
Cycle Use	Initial Charging Current less than 180.0 A.Voltage	
	2.4V~2.5 V at 25 °C(77 °F)Temp. Coefficient -5mV/°C	
Standby Use	No limit on Initial Charging Current Voltage	
	2.25V~2.3V at 25 °C(77 °F)Temp. Coefficient -3mV/°C	
Capacity affected by Temperature	40°C (104 °F)	103%
	25°C (77 °F)	100%
	0°C (32 °F)	86%
Self Discharge	JYC GP series batteries may be stored for up to 6 months at 25°C(77°F) and then a freshening charge is required. For higher temperatures the time interval will be shorter.	

ISO 9001	ISO 14001	OHSAS 18001	TLC
CE	RoHS	UL	PV Battery

Constant Current Discharge (Amperes) at 25 °C (77°F)

End	15min	30min	45min	1h	2h	3h	4h	5h	10h
1.60V	788	503	412	333	214.3	147.4	133.5	110.5	65.7
1.65V	758	499	393	323	207.5	144.6	128.4	107.2	63.4
1.70V	707	477	374	315	202.1	142.2	132.5	105.1	61.2
1.75V	644	434	364	307	197.2	139.3	120.1	101.2	60.8
1.80V	553	401	338	294	189.3	135.2	116.6	97.3	60.0

Constant Power Discharge (Watts) at 25 °C (77°F)

End	15min	30min	45min	1h	2h	3h	4h	5h	10h
1.60V	1383	1028	778	694	456.2	314.2	254.2	244.1	130.9
1.65V	1313	986	740	654	423.1	312.3	246.8	229.2	129.8
1.70V	1254	936	712	627	411.5	307.1	239.7	220.6	128.7
1.75V	1167	888	691	602	394.3	303.2	232.8	214.3	127.0
1.80V	1048	838	681	580	385.2	298.1	223.9	207.9	126.5

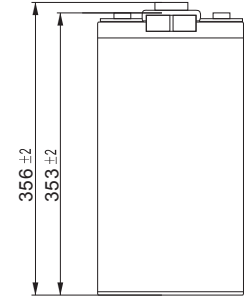
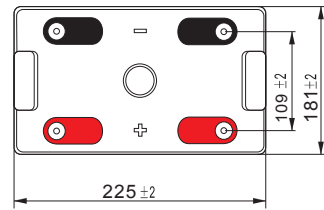
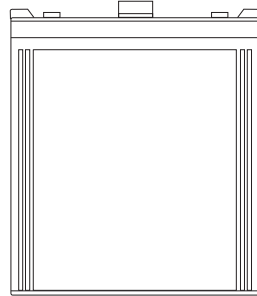
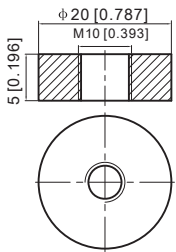
Note The above data are average values, and can be obtained with 3 charge/discharge cycles. These are not minimum values.

GP600-2 2V600AH

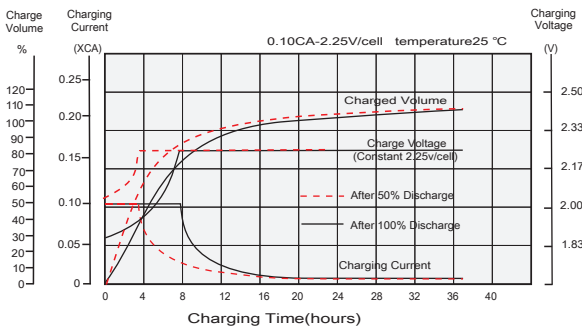
GP SERIES-Telecom Battery

Dimensions

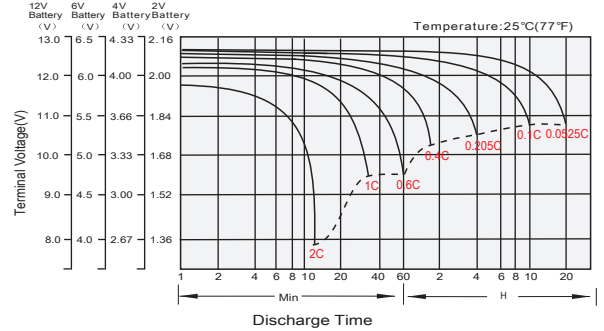
T11 Terminal
Unit: mm [inches]



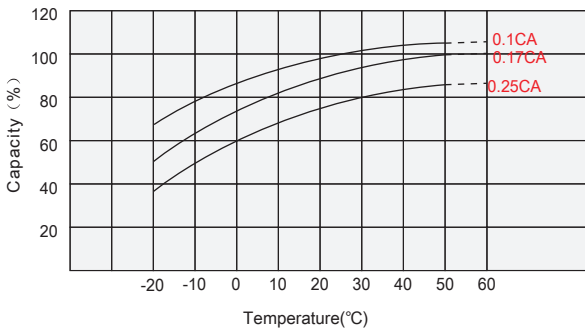
Float Charging Characteristics



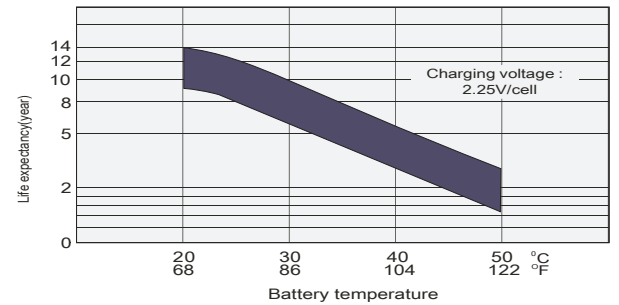
Discharge Characteristics



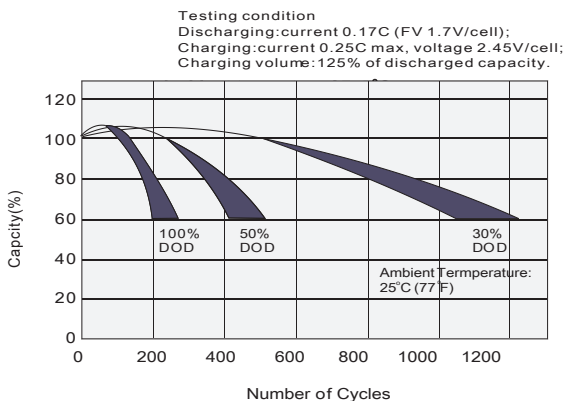
Temperature Effects in Relation to Battery Capacity



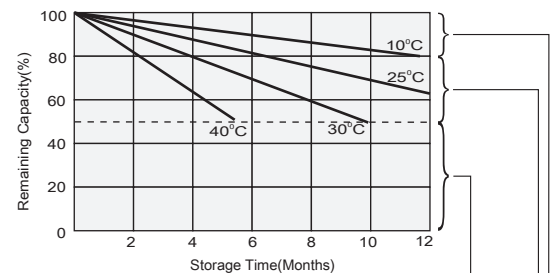
Effect of Temperature on Long Term Float Life



Cycle Life in Relation to Depth of Discharge



Self Discharge Characteristics



Supplemental charge may often fail to recover the capacity. The battery should never be left standing till this is reached.

Supplemental charge required before use. Optional charging way as below:
1. Charged for a above 3 days at limited current 0.25CA and constant voltage 2.25V/cell.
2. Charged for a above 20 hours at a limited current 0.25CA and constant voltage 2.45V/cell.
3. Charged for 8-10 hours at limited current 0.05CA.

No supplemental charge required
(Carry out supplemental charge before use if 100% capacity is required.)