

GP800-2 2V800AH

GP SERIES-Telecom Battery



Specification

Nominal Voltage	2V	
Nominal Capacity(10HR)	800AH	
Dimension	Length	290±3mm (11.41 inches)
	Width	183±3mm (7.20 inches)
	Container Height	361±3mm (14.21 inches)
	Total Height (with Terminal)	364±3mm (14.33 inches)
Approx Weight	Approx 46.3 kg (101.95 lbs)	
Terminal	T11	
Container Material	ABS	

Applications

- ◆ Tele-communication central station (wired or cellular)
- ◆ Power system communication, military communication, etc.
- ◆ Network communication including: data transmission, television signal transmission, etc.
- ◆ Uninterruptable Power System (UPS- for Telecom)

Rated Capacity	810.0 AH/81.0A	(10hr, 1.80V/cell, 25°C/77°F)
	673.5 AH/134.7A	(5hr, 1.75V/cell, 25°C/77°F)
	549.9 AH/183.7A	(3hr, 1.75V/cell, 25°C/77°F)
	444.0 AH/444.0A	(1hr, 1.60V/cell, 25°C/77°F)

Max. Discharge Current	6400A (5s)
Internal Resistance	Approx 0.50 mΩ

Operating Temp. Range	Discharge	-15~50°C (5~122°F)
	Charge	0~40°C (32~104°F)
	Storage	-15~40°C (5~104°F)

Nominal Operating Temp. Range	25±3°C (77±5°F)
-------------------------------	-----------------

Cycle Use	Initial Charging Current less than 240.0 A. Voltage	
	2.4V~2.5 V at 25 °C(77 °F)	Temp. Coefficient -5mV/°C

Standby Use	No limit on Initial Charging Current Voltage	
	2.25V~2.3V at 25 °C(77 °F)	Temp. Coefficient -3mV/°C

Capacity affected by Temperature	40°C (104 °F)	103%
	25°C (77 °F)	100%
	0°C (32 °F)	86%

Self Discharge	JYC GP series batteries may be stored for up to 6 months at 25°C(77°F) and then a freshening charge is required. For higher temperatures the time interval will be shorter.
----------------	---

ISO 9001	ISO 14001	OHSAS 18001	TLC
CE	RoHS	UL	PV Battery

Constant Current Discharge (Amperes) at 25 °C (77°F)

End	15min	30min	45min	1h	2h	3h	4h	5h	10h
1.60V	1050	671	549	444	285.0	196.0	178.0	147.5	88.0
1.65V	1010	665	525	431	277.2	190.7	171.2	143.3	85.2
1.70V	943	637	500	421	270.0	189.0	166.4	140.0	82.6
1.75V	858	579	485	409	263.0	183.7	161.7	134.7	81.7
1.80V	737	535	451	392	252.0	180.0	157.1	129.5	81.0

Constant Power Discharge (Watts) at 25 °C (77°F)

End	15min	30min	45min	1h	2h	3h	4h	5h	10h
1.60V	1831	1351	1030	918	592.7	408.6	338.9	317.3	169.9
1.65V	1738	1296	948	865	557.4	405.9	329.2	297.7	168.5
1.70V	1659	1242	906	829	534.6	398.8	316.5	286.2	167.0
1.75V	1545	1210	880	796	512.5	394.2	307.3	273.6	165.0
1.80V	1387	1186	862	768	500.0	390.6	297.9	259.2	163.8

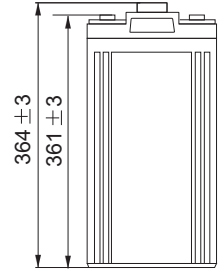
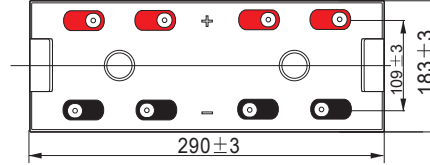
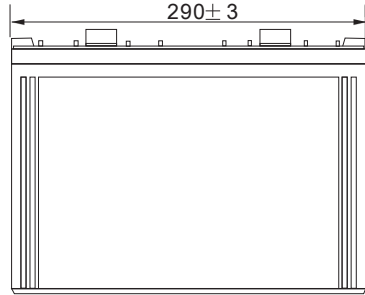
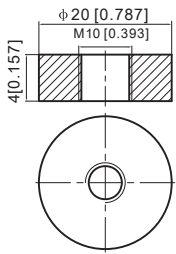
Note The above data are average values, and can be obtained with 3 charge/discharge cycles. These are not minimum values.

GP800-2 2V800AH

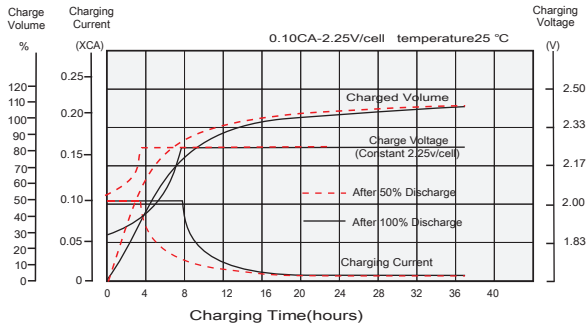
GP SERIES-Telecom Battery

Dimensions

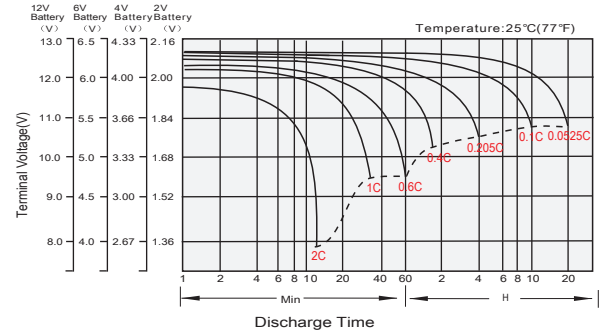
■ T11 Terminal
Unit: mm [inches]



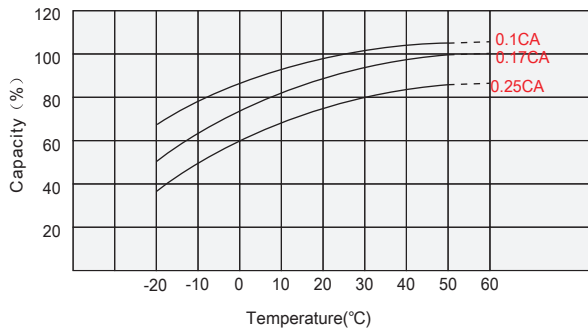
Float Charging Characteristics



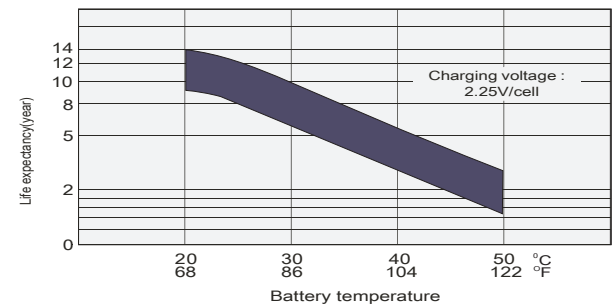
Discharge Characteristics



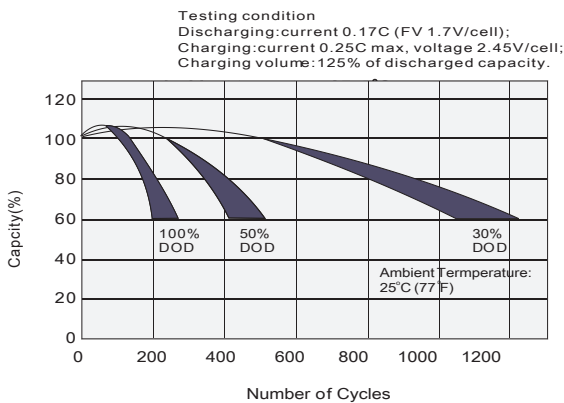
Temperature Effects in Relation to Battery Capacity



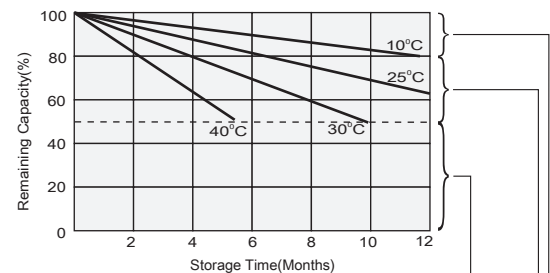
Effect of Temperature on Long Term Float Life



Cycle Life in Relation to Depth of Discharge



Self Discharge Characteristics



Supplementary charge may often fail to recover the capacity. The battery should never be left standing till this is reached.

Supplementary charge required before use. Optimal charging way as below:
1. Charged for a above 3 days at limited current 0.25CA and constant voltage 2.25V/cell.
2. Charged for a above 20 hours at a limited current 0.25CA and constant voltage 2.45V/cell.
3. Charged for 8-10 hours at limited current 0.05CA.

No supplementary charge required
(Carry out supplementary charge before use if 100% capacity is required.)